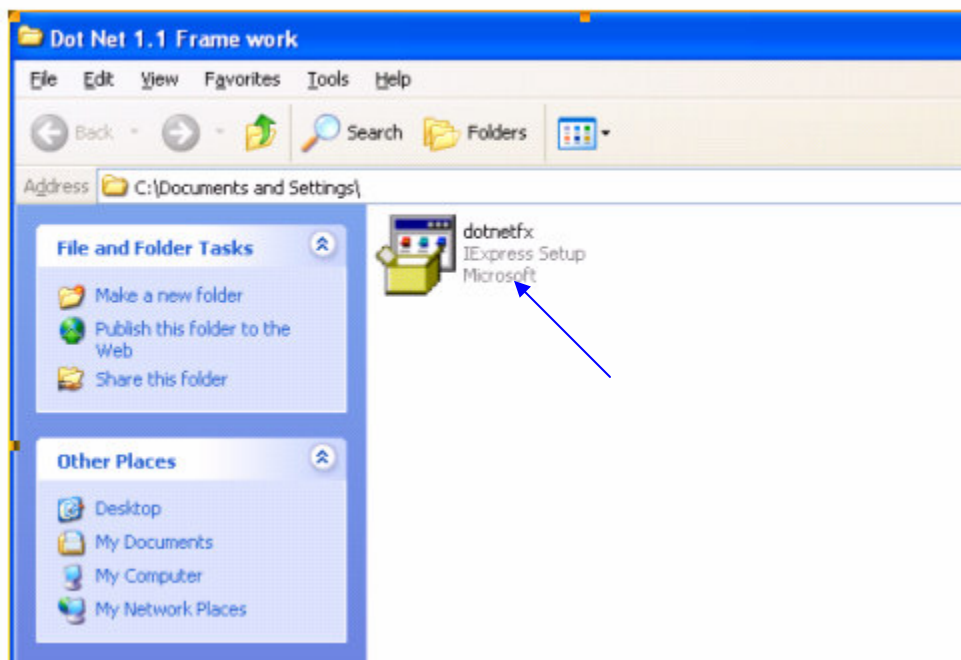
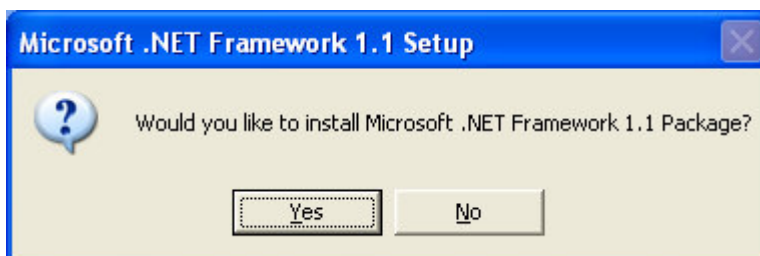


# Instruction manual for installation of .NET Framework 1.1

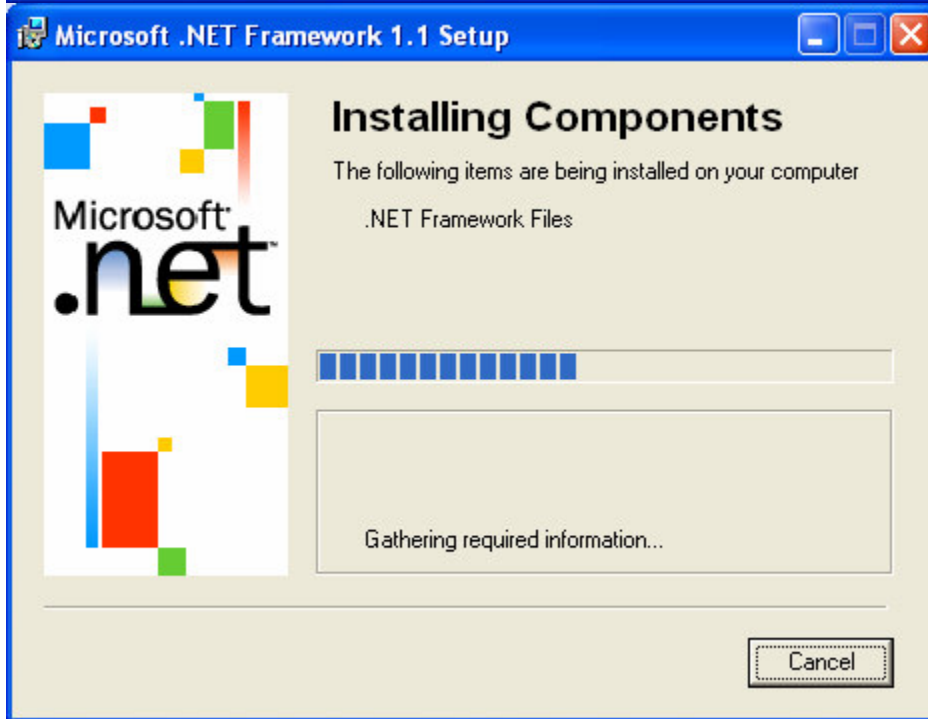
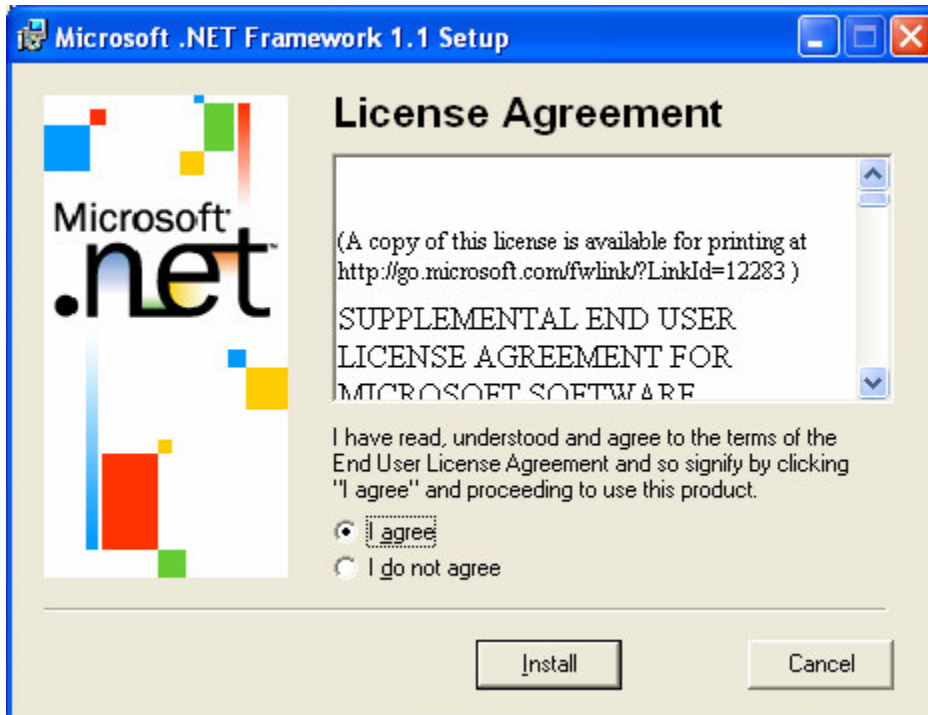
1) Copy the contents of the folder “**Dot Net Framework 1.1**” onto to your desktop or any folder on to your machine and click on “**dotnetfx**” (as shown below)



2) Click “**Yes**” on the dialog box that appears as shown below



3) Select the radio button "I agree" on the License Agreement copy of the MS .NET Framework 1.1 setup ( as shown below)





4) To complete the process of installation click "OK" in the dialog box as shown below

