

Unscrambler
Classifier

Installation Procedure
for
Unscrambler Classifier 9.8



Table of Contents

OLUC Installation Manual.....	1
1 Requirements prior to installation of OLUC 9.8.....	1
2 How to install OLUC 9.8	1
3 How to start OLUC 9.8.....	8



Table of Figures

Figure 1 - The setup.exe file in your installation folder	1
Figure 2 – OLUC 9.8 Setup Wizard.....	2
Figure 3 - License Agreement of the Product.....	3
Figure 4 - Product serial number	4
Figure 5 - Licensee information	5
Figure 6 - Destination location for installation.....	6
Figure 7 - Installation Complete.....	7
Figure 8 - OLUC through Startup menu.....	8

1 Requirements prior to installation of OLUC 9.8

OLUC 9.8 can be installed on Windows 2000, 2003, XP & Vista OS.

- Copy the contents of the folder OLUC98 any location, for example, <drive>:\ OLUC98
- Move to the folder <drive>:\ OLUC98
- Within the folder 'OLUC98 ' double click the 'setup.exe' file

2 How to install OLUC 9.8

Step 1: Double click on the 'Setup.exe'

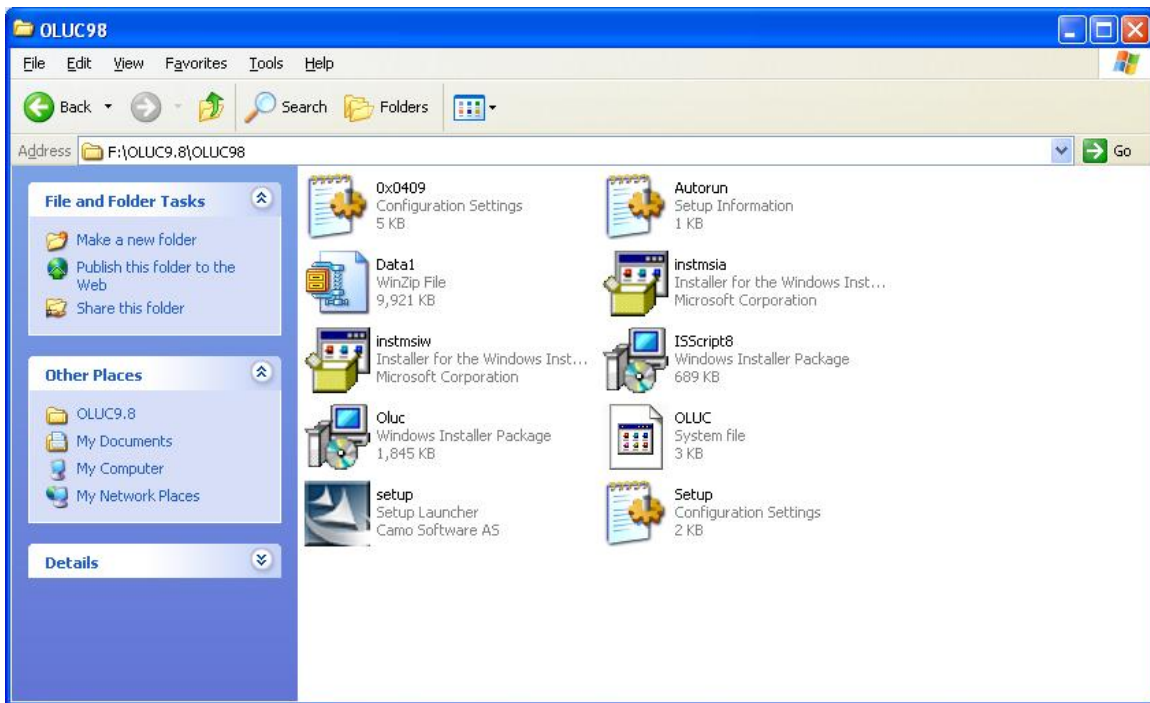


Figure 1 - The setup.exe file in your installation folder

Step 2: Click 'Next' button

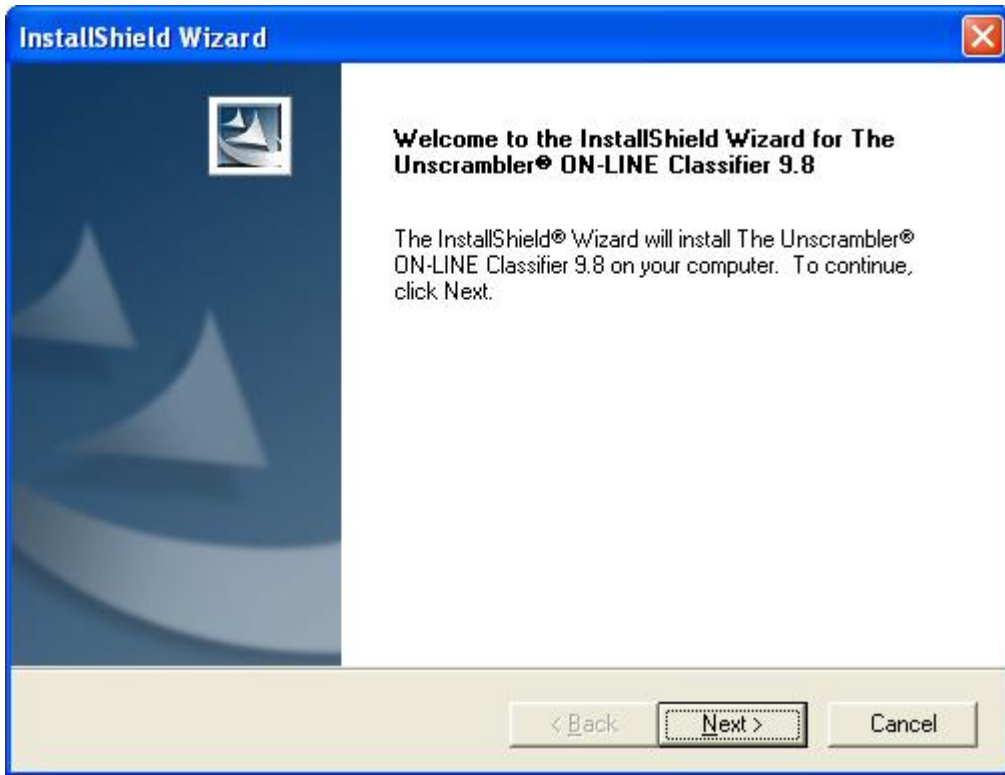


Figure 2 – OLUC 9.8 Setup Wizard

Step 3: Click on the ‘Yes’

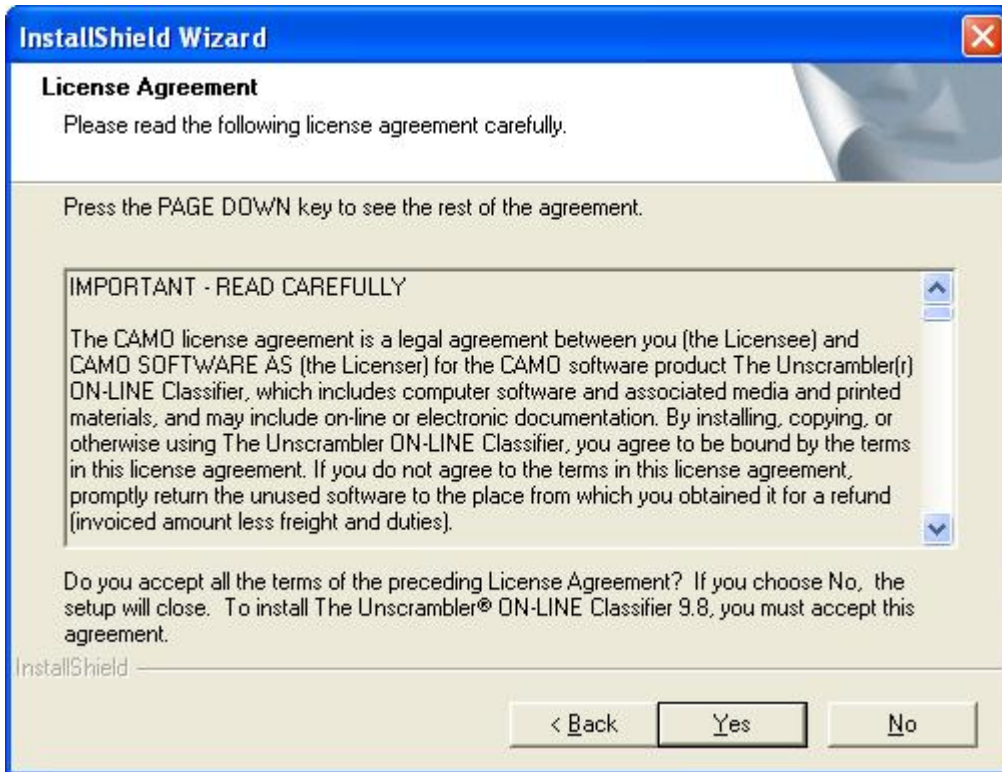


Figure 3 - License Agreement of the Product

Step 4: Enter serial number and click on 'Next'.

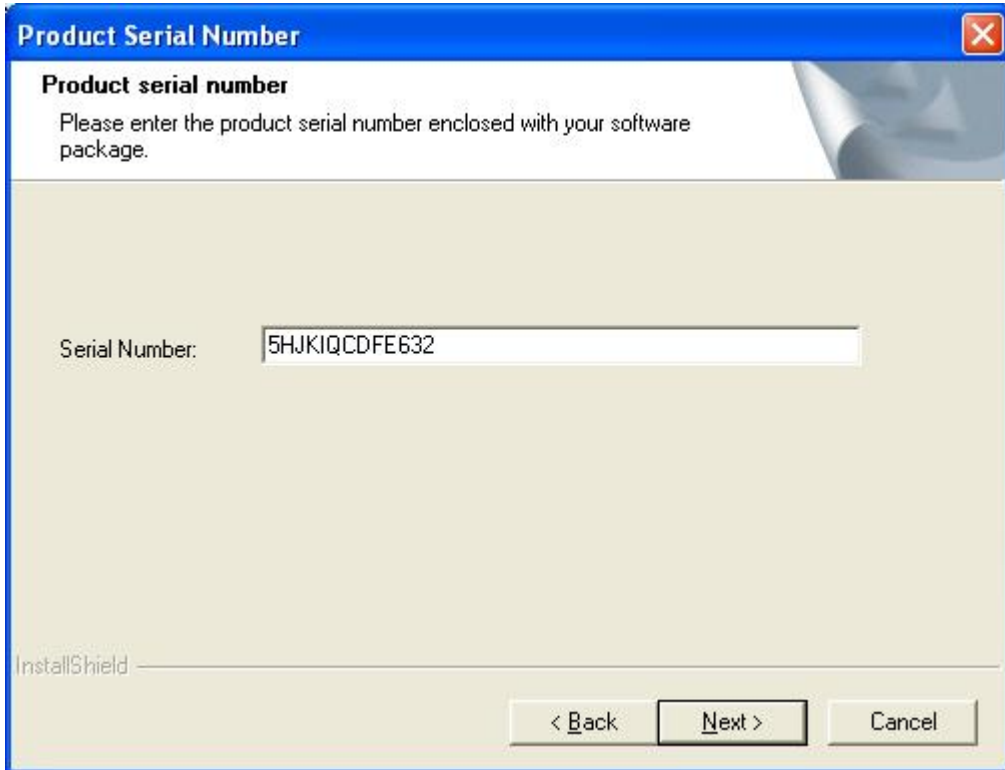
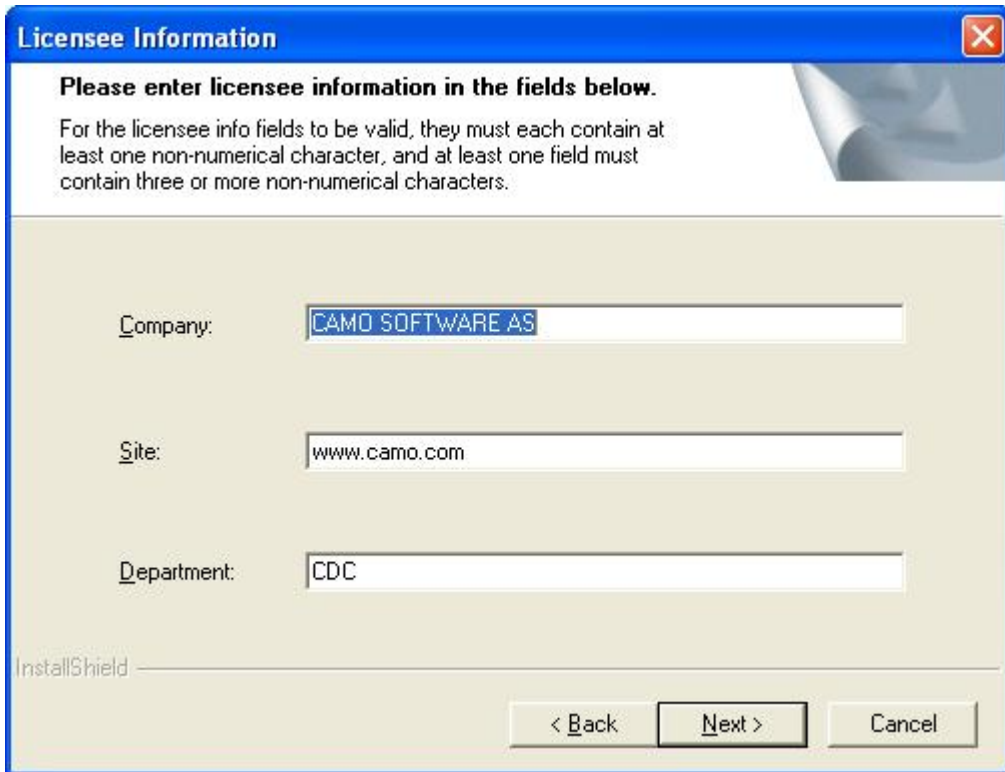


Figure 4 - Product serial number

Step 5: Click on 'Next'



Licensee Information

Please enter licensee information in the fields below.

For the licensee info fields to be valid, they must each contain at least one non-numerical character, and at least one field must contain three or more non-numerical characters.

Company: CAMO SOFTWARE AS

Site: www.camo.com

Department: CDC

InstallShield

< Back Next > Cancel

Figure 5 - Licensee information

Step 6: Click on 'Next'. Default path for Installation is "C:\Program Files\OLUC"

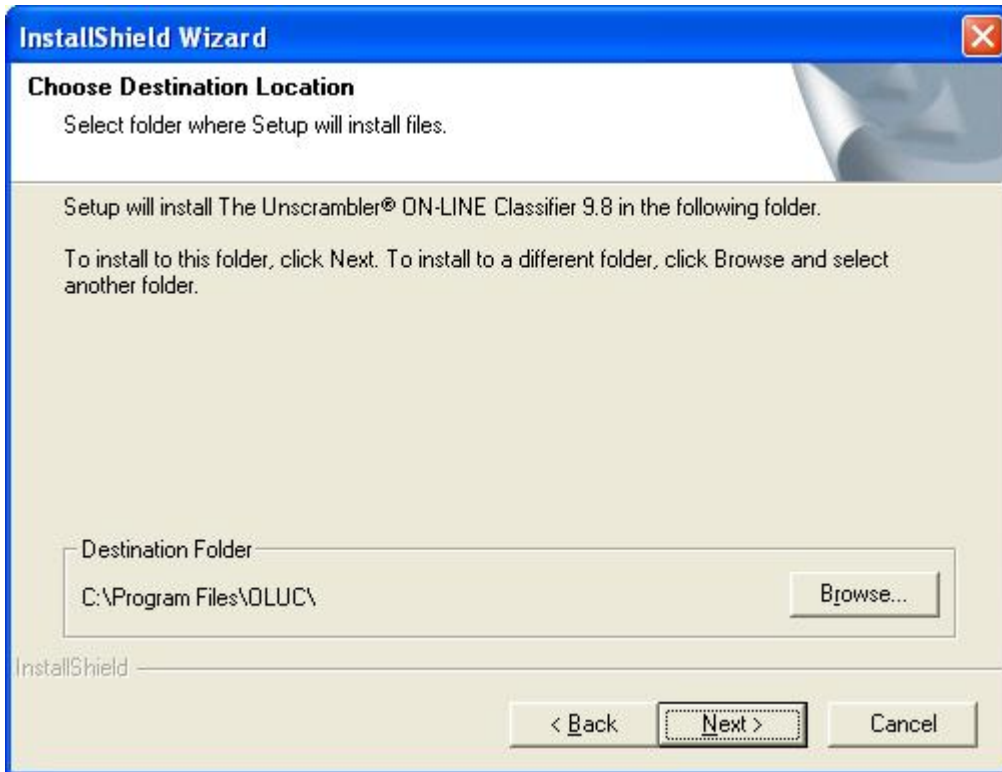


Figure 6 - Destination location for installation

Step 7: Click on 'Finish'

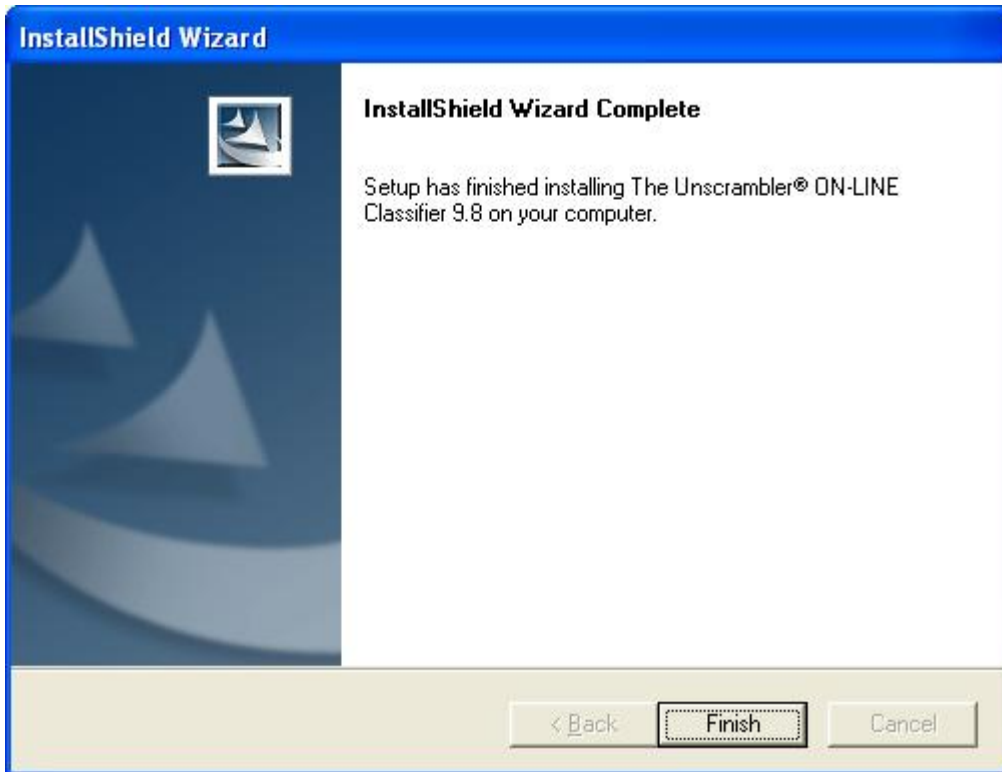


Figure 7 - Installation Complete

3 How to start OLuc 9.8

Step 1: Access the application through Programs >OLUC 9.8 >C++ Sample

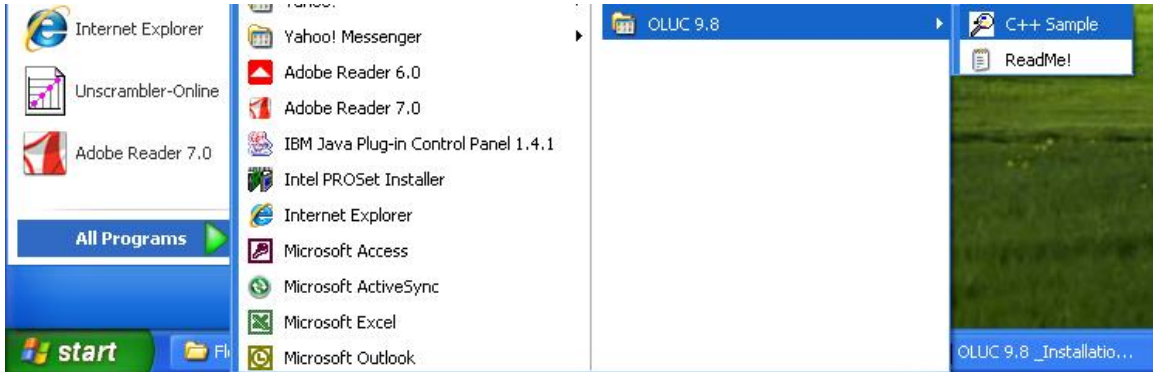


Figure 8 - OLuc through Startup menu