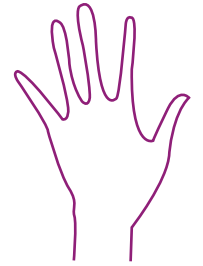


Qualify your  
**sensory** data



# Quali-Sense

In the food and beverage industry, little can be done without the benefits of a professional panel of human assessors. A sensory panel is the most effective, most natural tool to describe the complex properties of food that trigger our five senses when consuming a product. Yet, sensory profiling is only useful when the panel is well-trained and the evaluations are validated.

Quali-Sense is the best companion a panel leader can hope for. Using a set of statistical tests, Quali-Sense detects the personal strengths and weaknesses of each assessor in your panel. Discover the panelists' sensitivity, reproducibility or cross-over issues for each attribute; check the global panel agreement. And use this information to further train and qualify your panel, such that you can keep on developing unique products.

# What makes your product unique?



Is it its smooth **touch**?

Does it have a pleasant **taste**?

Or a delicate **aroma**?

Is it its bright **appearance**?

Does it have a clear **sound**?

- Detect panelists who are not replicating their assessments accurately
- Locate panelists who misunderstood the scale
- Evaluate the sensitivity performance of each panelist
- Map the panelists' needs for retraining
- Single-out meaningful descriptors for the product
- Select reliable panelists and attributes
- Average assessments for further analysis in The Unscrambler®

## Plots for direct data and result visualization

- Spider plot • Box plot • Spotty plot • Eggshell plot

## Color-coded result tables for easy interpretation

	Adhesiveness	After taste	Cinnamon aro	Crumbleness	Greasiness	Mint flavour	Moistness	Reg-Code	Samp#
▶ Henry	0.6	0	0	0.98	0.03	0	0.96	1	0
Ken	0.21	0	0.02	0.04	0.01	0.01	0.02	1	0
Linda	0.31	0	0	0.2	0	0	0.77	1	0
Maria	0.94	0	0	0.27	0	0	0.1	1	0
Oliver	0.16	0.01	0	0.23	0	0	0.09	1	0
Valerie	0	0	0	0.01	0	0	0	1	0

- Table of results (p-values) for the reproducibility test
- Summary report automatically generated
- Data import/export from/to Microsoft Office Excel or ASCII file formats- (\*.txt or \*.csv), directly readable in The Unscrambler®

5

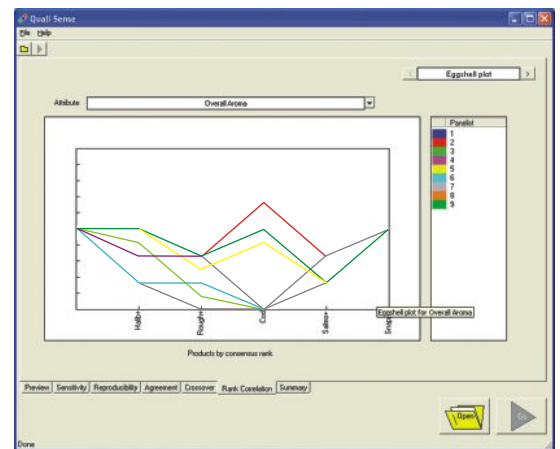
## Panelist performance tests

- Assessor Sensitivity
- Assessor Reproducibility
- Assessor Agreement
- Assessor Crossover
- Eggshell Correlation

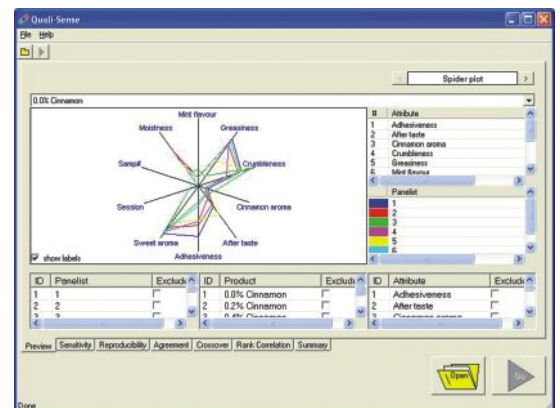
30 Day Trial

Try Now

[www.camo.com/Quali-Sense](http://www.camo.com/Quali-Sense)



Eggshell plot



Spider plot

# Quali-Sense

Qualify your sensory data



[www.camo.com](http://www.camo.com)

**CAMO Software AS.**  
Nedre Vollgate 8  
N-0158, Oslo  
NORWAY

Tel: (47) 223 963 00  
Fax: (47) 223 963 22

**CAMO Software Inc.**  
One Woodbridge Center, Suite 319  
Woodbridge, NJ 07095  
USA

Tel: (732) 726 9200  
Fax: (973) 556 1229

**CAMO Software India Pvt. Ltd .**  
14 & 15, Krishna Reddy Colony  
Domlur Layout, Bangalore - 560 071  
INDIA

Tel: (91) 80 4125 4242  
Fax: (91) 80 4125 4181

**CAMO Software**  
Australia and New Zealand  
PO Box 97, St Peters, NSW, 2044  
AUSTRALIA

Tel: (61) 408 882 007  
Fax: (612) 9516 2934